

[Hotel Openings](#) / [Hotel Opening Rates](#) / [Z Hotels](#) / [Affordable Hotels](#) / [London Hotels](#) / [Shoreditch Hotels](#) / [-- All Tags](#)

Z Hotels Opens Early in Shoreditch, Adds Sixth London Hotel on Fleet Street

 **Where:** 136-144 City Road, London, United Kingdom, EC1V 2RL

March 25, 2015 at 9:24 AM | by JasonD | Comments (0)



How about that: when we first learned about [The Z Hotels](#) heading out to [Shoreditch](#) (like everyone else), we thought the opening of its hotel in [The Bower](#) complex wouldn't happen until second half of the year. **Wrong** - [The Z Shoreditch](#) opened on **March 9**.

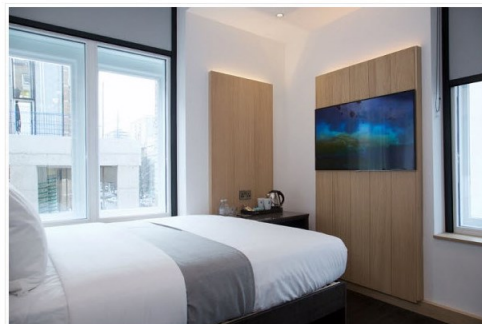
But before we get to that, the budget-chic group is throwing a sixth [London hotel](#) in the mix on **Fleet Street**, right across from the [Royal Courts of Justice](#). That will be the building above, a former office that will have 110 rooms between the lower ground, ground, and three upper floors. Behind the hotel is a beautiful courtyard with the [Temple Church](#), built by the [Knights Templar](#) and famous from the [Dan Brown](#) novel. A few more shots below.



On the left the back of the hotel; a room facing this way will give you pure tranquility in the heart of the City. Strolling through the courtyard, down to the gardens on the river, and through the courts on the other side of Fleet Street is one of our favorite things. The location also gives you easy access to Covent Garden, Soho, and Southbank.



Opening is listed for December 2015, with the fifth Z Hotel - at Gloucester Place in [Marylebone](#) - now projected for January next year. Interestingly, it looks like the [Marylebone hotel](#) will be a bit different than other Z Hotels. Gloucester Place by Z Hotels will cover four buildings, with three buildings (23, 33, and 51-55 Gloucester Place) offering 89 bedrooms, while 87 Gloucester Place "will offer a unique luxury product" with 20 bedrooms that range up to "Grand Suites". We'll have to see how that hybrid of budget-chic and unique luxury pans out.



Circling back to Shoreditch, the 111 rooms are now up and running on the corner of Old Street roundabout, with your choice between Double/Queen with or without windows, as well as Accessible Rooms. Rates start from £59 (\$88), which look to go up to about £115 (\$172) a night on weekends during the next few weeks.

[Photos: JasonD for HotelChatter, Z Hotels]